



Get Started with MIPS

Mingle Analytics will guide you every step of the way

What we plan to cover:

- ✓ An overview of MIPS
- ✓ Transition Year Scoring
- ✓ Who participates
- ✓ An introduction to MIPS Solutions™

Q&A

We'll stay on after the presentation
to answer your questions!

Introducing Mingle Analytics



Analytics for Value Based Health Care

- #1 registry by volume for Group submissions in 2015
- Top 10 Rated by
 - Black Book
 - Healthcare Tech
- Submitted in 2016 for 2800 Practices, 33,000 providers, 50 States, 4 Territories
- 94 Net Promoter Score
- 99%+ submission success rate

More that 50 team members dedicated to helping you succeed with Medicare reporting

Getting Started with MIPS

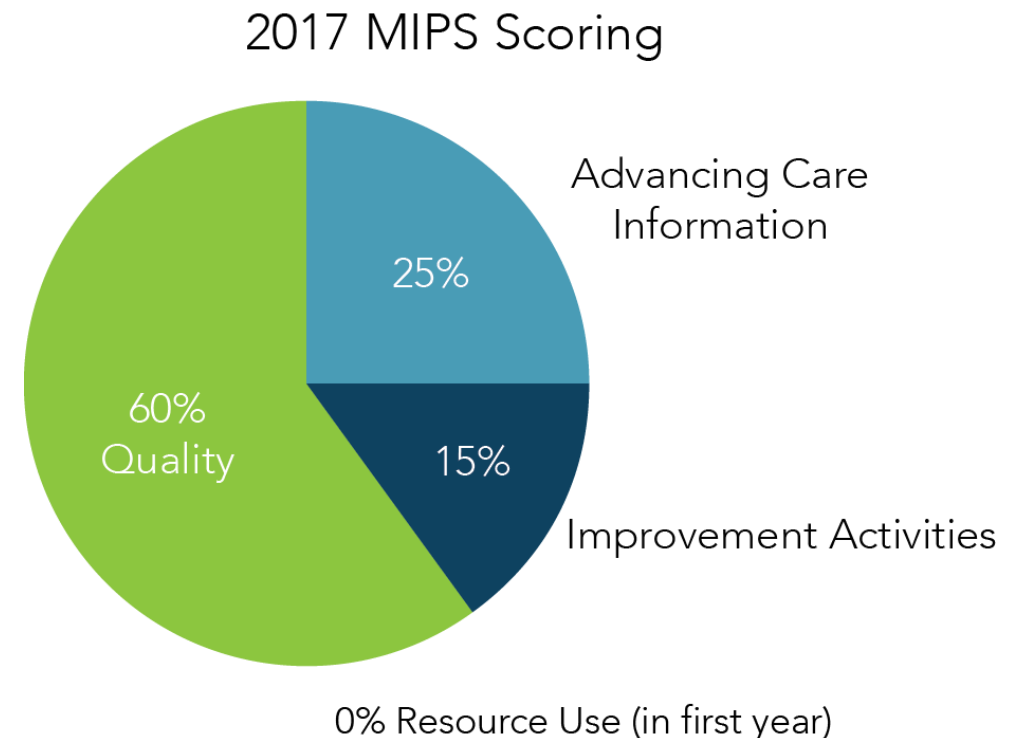
What you need to know

MIPS and the Quality Payment Program

The Merit-Based Incentive Payment System (MIPS) began January 1, 2017.

In the 2017 transition year, you will be scored based on three performance categories.

Depending on the Edition you choose, MIPS Solutions by Mingle Analytics lets you complete each of the performance categories.



Familiar programs combined into MIPS

MIPS Performance Categories	Replaces
Quality	PQRS & CMS-calculated measures under VM
Resource Use	CMS-calculated measures under VM
Advancing Care Information (ACI)	EHR Incentive Program (MU) for eligible professionals
Improvement Activities (IA)	New category

What potential impact does MIPS have?

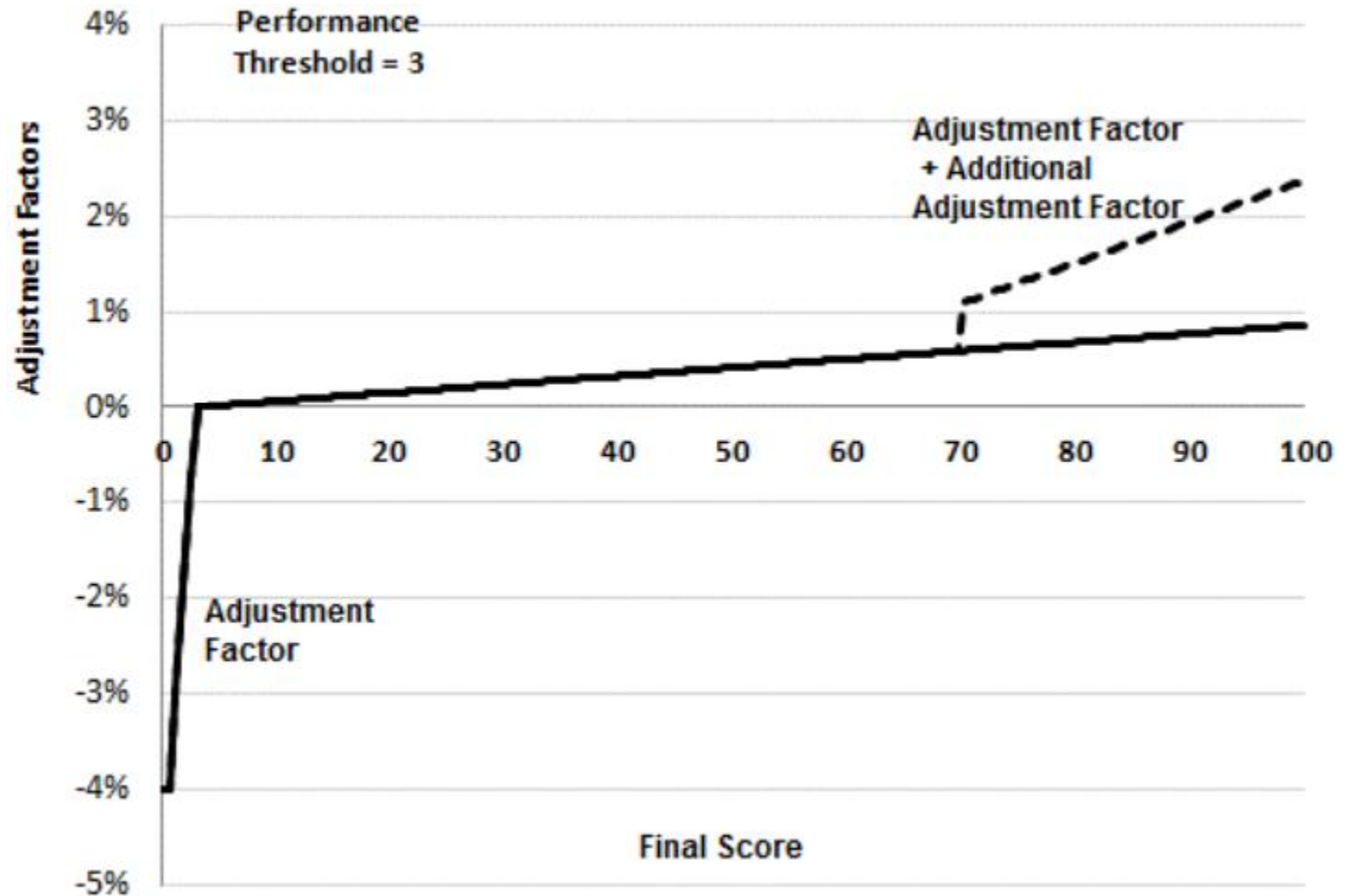


Transition Year Plan

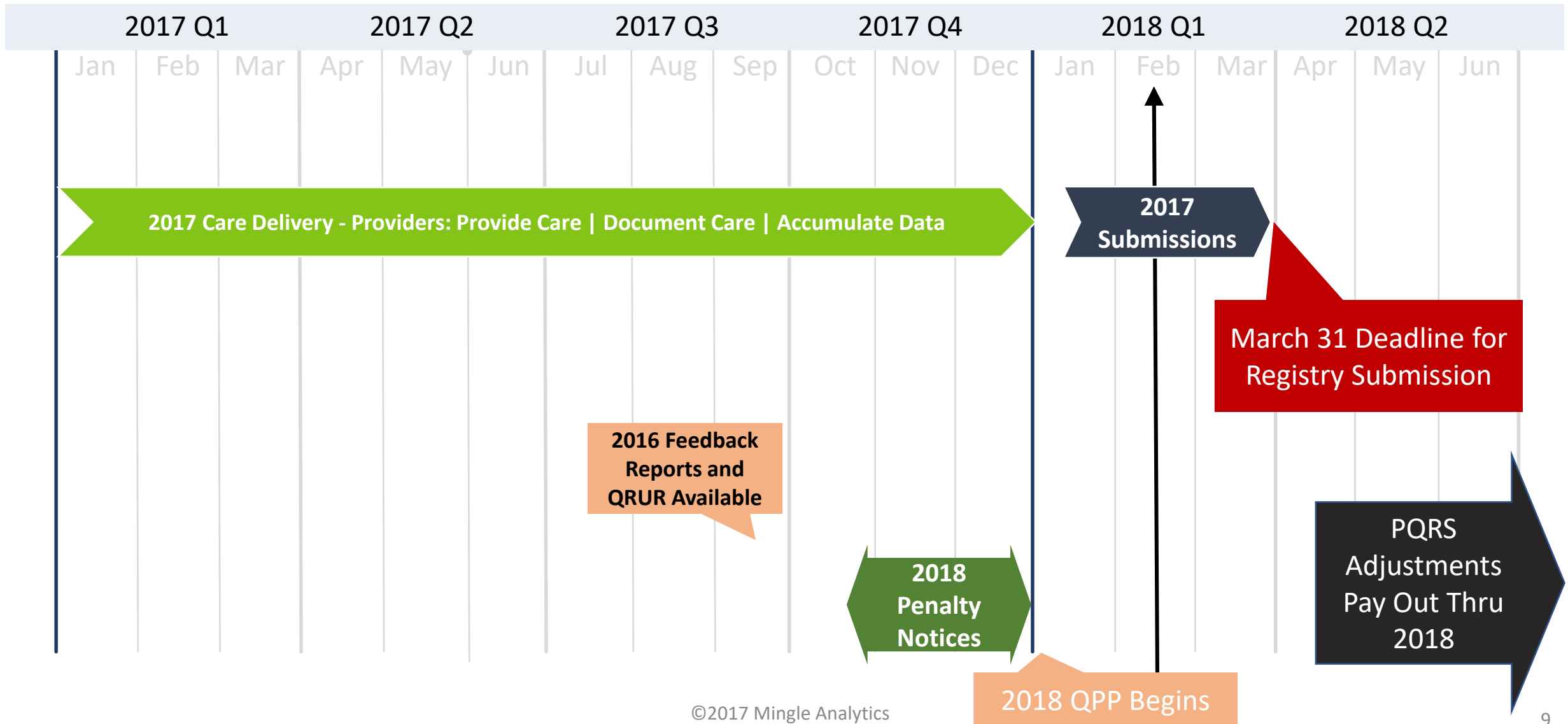
2017 Performance Year
2019 Payment Year

Pick Your Pace Options 2017

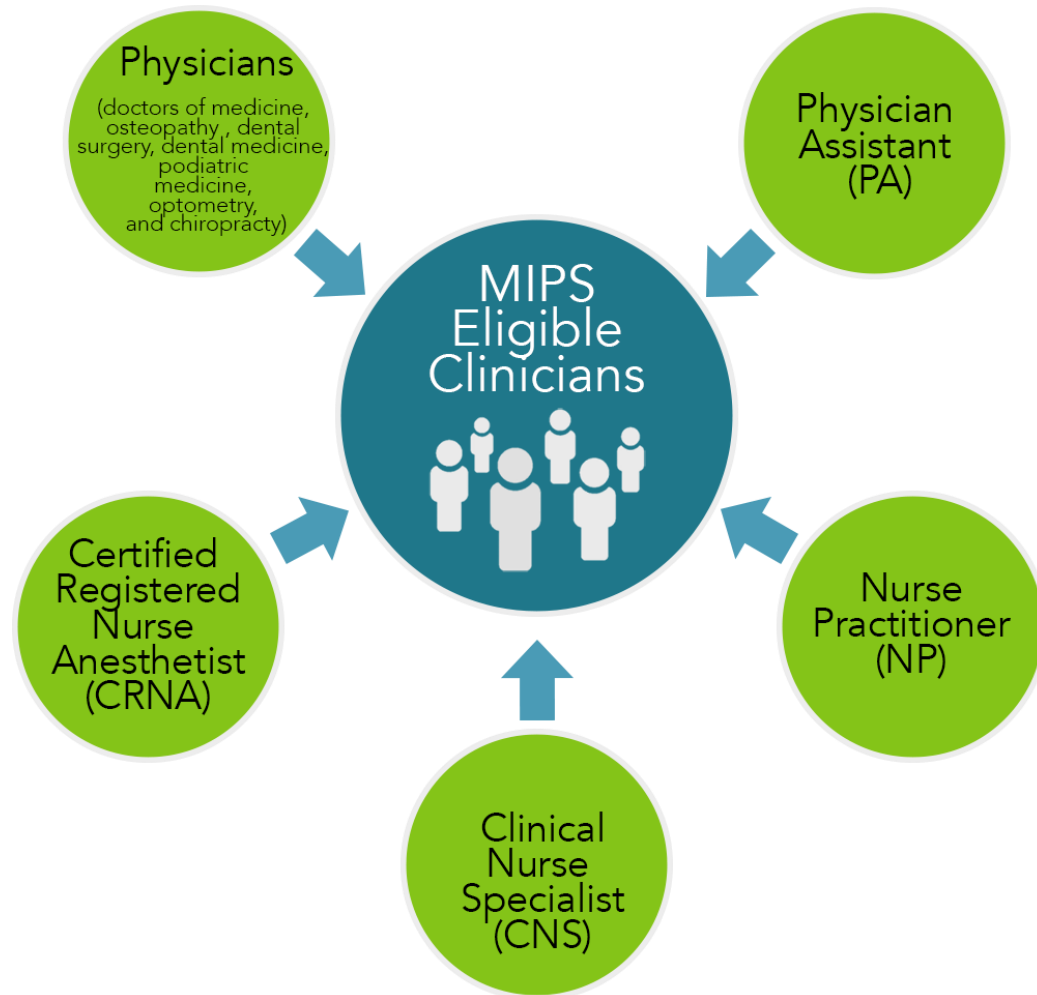
- Do Nothing
- One Measure
- Some Data
- All In
- Advanced APM



Medicare Quality Reporting Timeline



Who will you be reporting for?



MIPS Eligible in 2017:

Physicians (doctors of medicine, osteopathy, dental surgery, dental medicine, podiatric medicine, optometry, and chiropracty)

Physician Assistants (PA)

Nurse Practitioners (NP)

Clinical Nurse Specialists (CNS)

Certified Registered Nurse Anesthetists (CRNA)

<https://qpp.cms.gov/participation-lookup>

Are any of your Clinicians exempt?

Who is Excluded from MIPS?

Clinicians who are:



Newly-enrolled in Medicare

Enrolled in Medicare for the first time during the performance period

(exempt until following performance year)



Significantly Participating in Advanced APM's

Receive 25% of your Medicare payments

OR

See 20% of your Medicare patients through an Advanced APM



Below the Low-Volume Threshold

Medicare Part B allowed charges less than or equal to \$30,000 a year

OR

See 100 or fewer Medicare Part B patients a Year

MIPS Solutions™ Essentials Edition

We have a plan to meet your needs to avoid a penalty!

Most Cost-Effective!

Essentials Edition

Participate in MIPS
to avoid a penalty


Report one quality measure; or, the base
ACI measures; or, IA attestation

\$249
per provider

Quality Module | MIPS Solutions

MIPS SOLUTIONS

http://mingleanalytics.com/mipsolutions


New Medical Associates | sjohnson@newmed.com

Home
ADVISOR
ACTIVITIES
MODULES
REPORTS
KNOWLEDGE SEARCH
⚙️

Measure Advisor

Select Year

Select a Specialty Measure Set

Select Reporting Method

#	Measure Name	Outcome	High Priority	Strata	Documents	Ease of Extraction
1	Diabetes: Hemoglobin A1c (HbA1c) Poor Control (>9%)	✓	✓	1	Spec Performance	★★★★★
5	Heart Failure (HF): Angiotensin-Converting Enzyme (ACE) Inhibitor or Angiotensin Rec...			2	Spec Performance	★★
6	Coronary Artery Disease (CAD): Antiplatelet Therapy			1	Spec Performance	★★★★★
7	Coronary Artery Disease (CAD): Beta-Blocker Therapy-Prior Myocardial Infarction (MI) ...			2	Spec Performance	★★
8	Heart Failure (HF): Beta-Blocker Therapy for Left Ventricular Systolic Dysfunction (LVSD)			2	Spec Performance	★★
12	Primary Open-Angle Glaucoma (POAG): Optic Nerve Evaluation			1	Spec Performance	★★★★★
14	Age-Related Macular Degeneration (AMD): Dilated Macular Examination			1	Spec Performance	★★★★
19	Diabetic Retinopathy: Communication with the Physician Managing Ongoing Diabetes...		✓	1	Spec Performance	★★
21	Perioperative Care: Selection of Prophylactic Antibiotic - First OR Second Generation C...		✓	1	Spec Performance	★★★★★

Improvement Activities Module | MIPS Solutions



Organization structure

Manage Clinicians

Search for practice

New Medical Associates - DEMO

Towns Radiology, Interventional Group

Jennings Family Medicine

Towns Radiology, Interventional Group

TIN: 108574320 | Year: 2017

Mechanism: Group | Subscription: Performance

Activities Summary

Enter Data

Activity ID	Activity Name	Weight	Points	Subcategory	Attested
IA_BE_6	Collection and follow-up on patient experience and satisfaction data on beneficiary engagement	High	20	Beneficiary Engagement	✓
IA_CC_2	Implementation of improvements that contribute to more timely communication of test results	Medium	10	Care Coordination	✓
IA_CC_1	Implementation of use of specialist reports back to referring clinician or group to close referral loop	Medium	10	Care Coordination	✓

Advancing Care Information Module | MIPS Solutions

Enter Measure Data for MARSII DEGRASSE (NPI: 1851833214) ACI Measure Set

e-Prescribing

Measure ID	Measure Name	Required	Score Weight	Objective
ACI_EP_1	e-Prescribing	✓	0	Electronic Prescribing

At least one permissible prescription written by the MIPS eligible clinician is queried for a drug formulary and transmitted electronically using certified EHR technology.

Numerator: / Denominator: = 90.80%

Provide Patient Access

Measure ID	Measure Name	Required	Score Weight	Objective
ACI_PEA_1	Provide Patient Access	✓	Up to 10	Patient Electronic Access

For at least one unique patient seen by the MIPS eligible clinician: (1) The patient (or the patient authorized representative) is provided timely access to view online, download, and transmit his or her health information; and (2) The MIPS eligible clinician ensures the patient's health information is available for the patient (or patient-authorized representative) to access using any application of their choice that is configured to meet the technical specifications of the Application Programming Interface (API) in the MIPS eligible clinician's certified EHR technology.

Numerator: / Denominator: = 69.67%

Security Risk Analysis

Measure ID	Measure Name	Required	Score Weight	Objective
ACI_PPHI_1	Security Risk Analysis	✓	0	Protect Patient Health Information

Conduct or review a security risk analysis in accordance with the requirements in 45 CFR 164.308(a)(1), including addressing the security (to include encryption) of ePHI data created or maintained by certified EHR technology in accordance with requirements in 45

Attested: Yes No

Cancel Save and Close

Getting Started

Thank you for choosing Mingle Analytics. Let's get go over the important information about your submission and the process you'll follow to avoid a MIPS penalty.

Participate in MIPS to avoid a penalty	With MIPS Solutions Essentials Edition, you'll report on 1 Quality Measure for 1 Patient
Enter the provider & mechanism	Enter the National Provider Identification (NPI) number for the provider(s). Each one will need to submit a Permission Form to authorize Mingle Analytics to submit data on their behalf to Medicare.
Select a measure	Review the measure specification documentation in the Mingle Analytics Measure Advisor™ to be sure you choose a patient that is eligible for the measure
Select a patient	The patient must have Medicare Part B or Railroad Medicare Insurance and meet the requirements outlined in the specification of the measure you have selected
Enter performance	To avoid a penalty, you must select a measure where the patient encounter meets the requirements as outlined in the measure specification
Review results & submit to Medicare	Review your submission and approve it for submission to Medicare

MIPS Solutions™

Submission is the easy part.
Let us help you with the hard part.

- ✓ Create a plan to avoid penalty
- ✓ Optimize incentive and potential bonus
- ✓ Select the right measures
- ✓ Analyze and improve performance
- ✓ Successfully submit data to Medicare

Sign up today to get started.

<https://mingleanalytics.com/get-started/>



Register today to get started with
MIPS Solutions!

<https://mingleanalytics.com/get-started/>

Your Quality Reporting Partner



<http://go.mingleanalytics.com/mingle-intro-video>

Helping You Thrive In The Business & Practice of Medicine

- ✓ CEO Dr. Dan Mingle, recognized industry innovator
- ✓ Quality reporting from a physician's perspective
- ✓ Submission success rate over 99%
- ✓ Equally committed to serving large and small practices